

# Brighton Municipal Fruit & Veg Market

[Home](#) [Places](#) [possible future visits](#) [hints n tips](#)



**We'd had our eye on this place for a long time, but every time we went past it, it looked totally impenetrable.**

**However, a chance meeting and a bit of luck were just what we needed.**

**[This was a fully legitimate and pre-arranged explore with full permission.](#)**

**Agents present: Ghost & Shades**

**As far as we know, no other Urbex Forum has obtained coverage of this building, legitimately or otherwise, so we feel very priveleged to have been able to obtain and display these images.**

**Our heartfelt thanks to the people who made this possible, especially the guys at the [Wood Recycling Project in Brighton](#).**





\*\*\*\*\*

Inside.







\*\*\*\*\*

Upstairs to the Canteen & Dining Area.











\*\*\*\*\*

Upstairs - Offices.

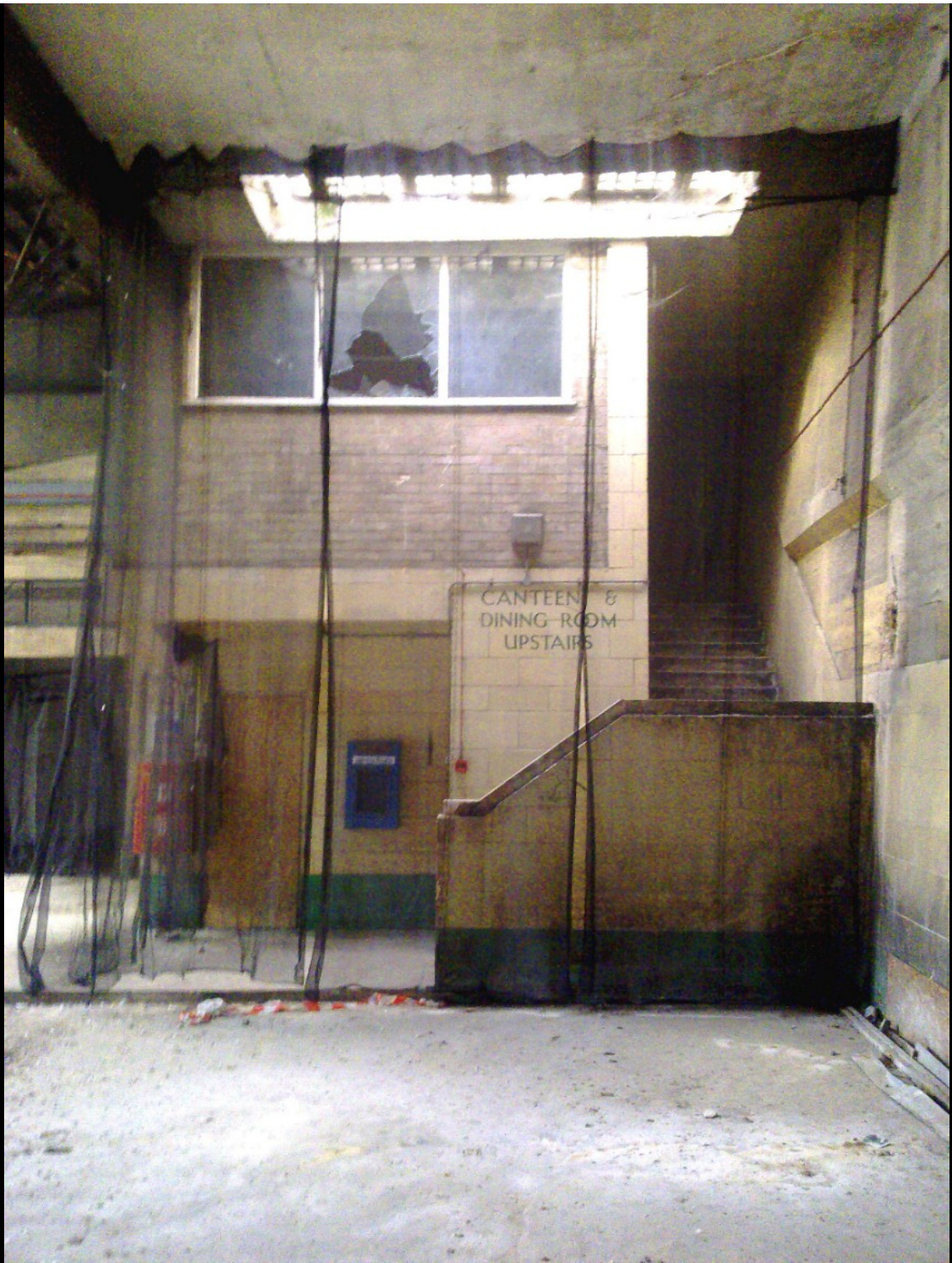


\*\*\*\*\*

Time Capsule.







CANTEEN &  
DINING ROOM  
UPSTAIRS



**FLOWER  
CITY  
— LTD —**

**NO  
PARKING**







\*\*\*\*\*

Arty shots & interpretations.











