



Just up the road (literally) from dear old West Park, is this little gem.

Relatively dull looking from the outside, it has only very recently been vacate and is earmarked to be demolished to make way for a school on the site, ready for the September 2012 term.

When we arrived on site, the electrics and lights were still very much live, the heating was on full blast and there had barely been time for the dust to settle.

Infiltration date: Recently.

Mission Operatives: ghost, skyframe and nissanman.

First - a little background.

As we say, the place is in imminent danger of being torn down and turned into a school, as of 13th June 2011. All the previous inpatients are being transferred to the nearby Tolworth Hospital.

There isn't a huge amount of background available as far as we could find except for a huge amount of opposition for the redevelopment of the site and the half a million pounds the NHS is paying outside consultants to oversee the redevelopment of the site.

The architecture suggests that the site was constructed largely between the wars, probably around 1936, although there are some buildings that make up part of the site such as Elm House, which look a lot older - having a distinctly Victorian look about them.

We had an interesting couple of hours in here looking around - it was fascinating to see the pristine Operating Theatre and X Ray Room, but for the most part, it was just a little too modern looking to float our boat: it could so easily have been the A&E department at Royal Sussex County Hospital and I've seen

quite enough of that place for one lifetime, thanks.

We did have a lovely day for it, though, and at least we can say that we went and saw it before it disappeared for good. I'd like to say a big THANKYOU to RustProofHawk and the other guys on 28DL for paving the way and putting us onto this one - it was pretty mint in there.

Finally, I'd like to say that I will never be able to dislodge the fabulous and hilarious image from my head, of Nissan Man sprinting full pelt across the lawn in front of the scaffolders whilst welding a 2 inch diameter perspex butt plug and bone saw. Hilarious.

Where is this place?





CLOCKWISE FROM ABOVE: The Surbiton Hospital in happier times...



ABOVE LEFT: Observation lamp, in perfect working order, with power.

BELOW LEFT: Every possible key to every available place. It was quite a creepy atmosphere in here - we kept expecting the nursing staff to turn up any minute. It was very strange and felt as though the residents had just disappeared as quickly as possible, abandoning the place as though they had been an epidemic or something.

RIGHT MIDDLE: Nissan Man posing for the camera.

BOTTOM RIGHT: Server Room: we cannot believe the amount of stuff that was just left here. For such a supposedly cash strapped organisation, the NHS doesn't appear to worry about the fact that all this will be slung out when the place is bulldozed. To give you a rough idea of the costs involved IN THIS ROOM ALONE, the cabinet is worth at least 400 quid, the CAT3 LAN cables are about a fiver a metre. The KVM (bottom left) is a few hundred and th 3 LAN hubs in the rack come to well over a grand in total. Insane....



















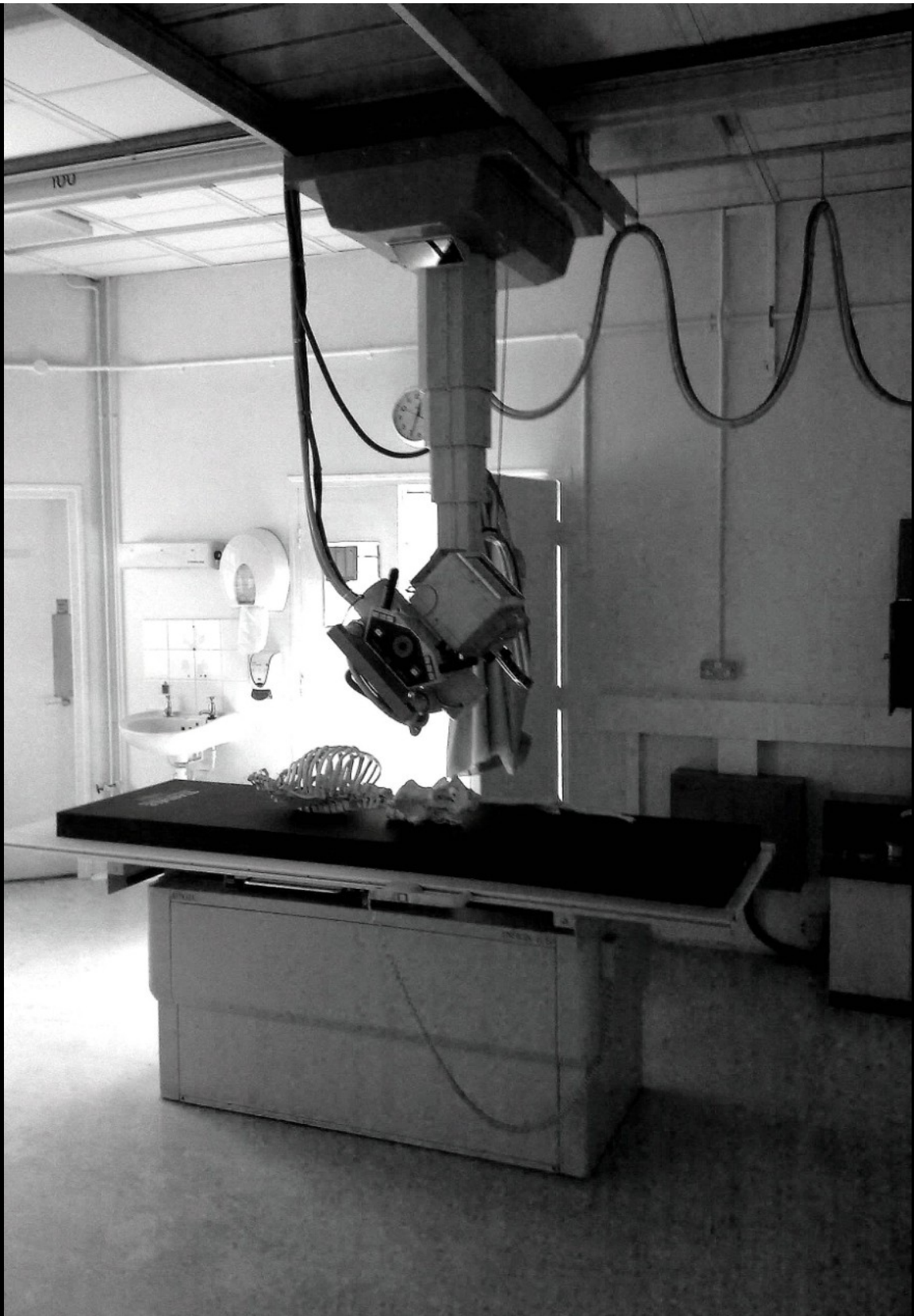


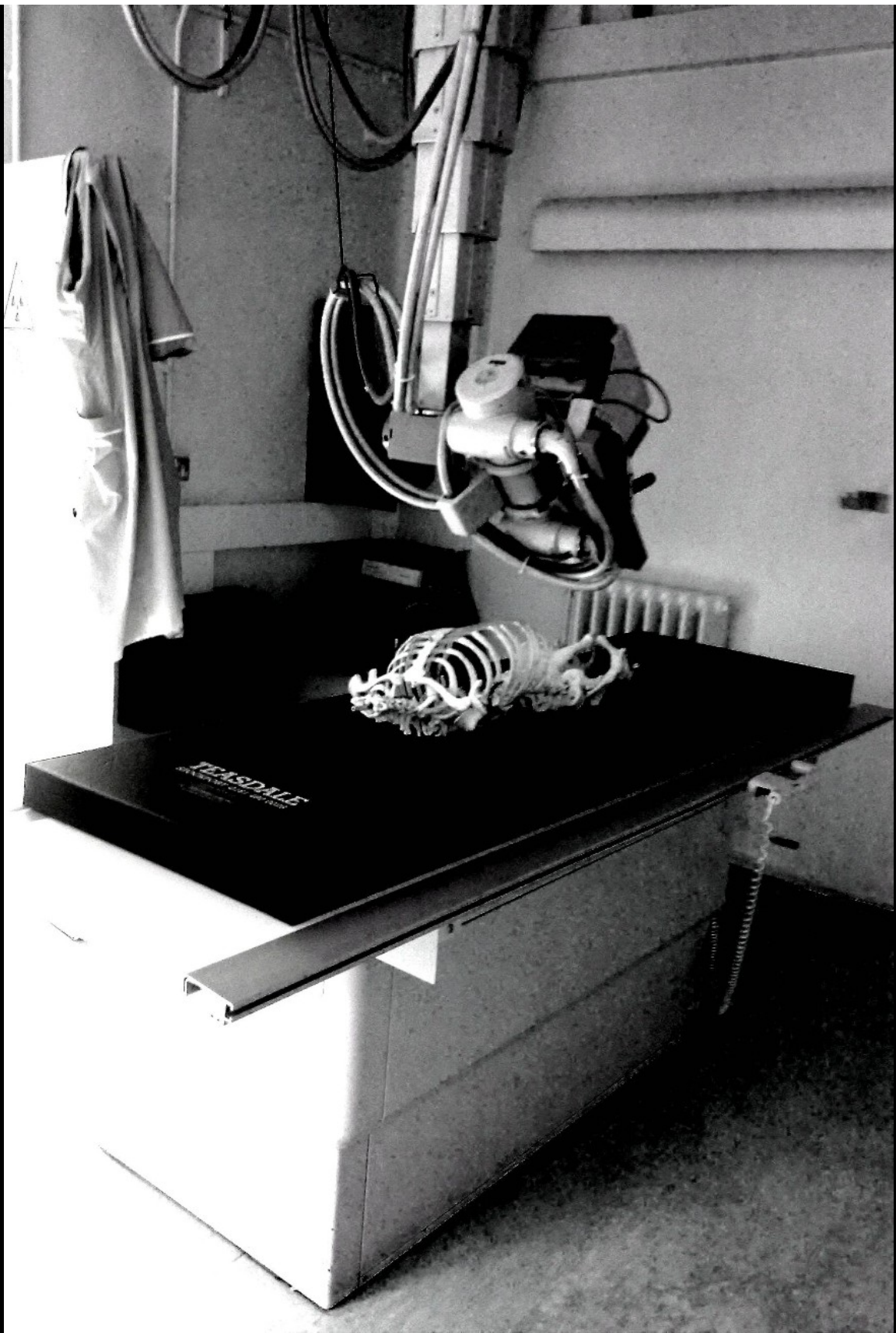


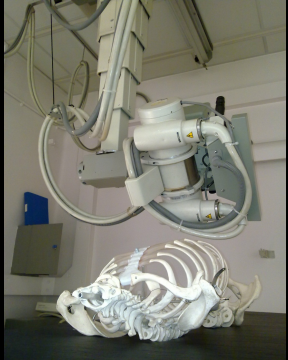
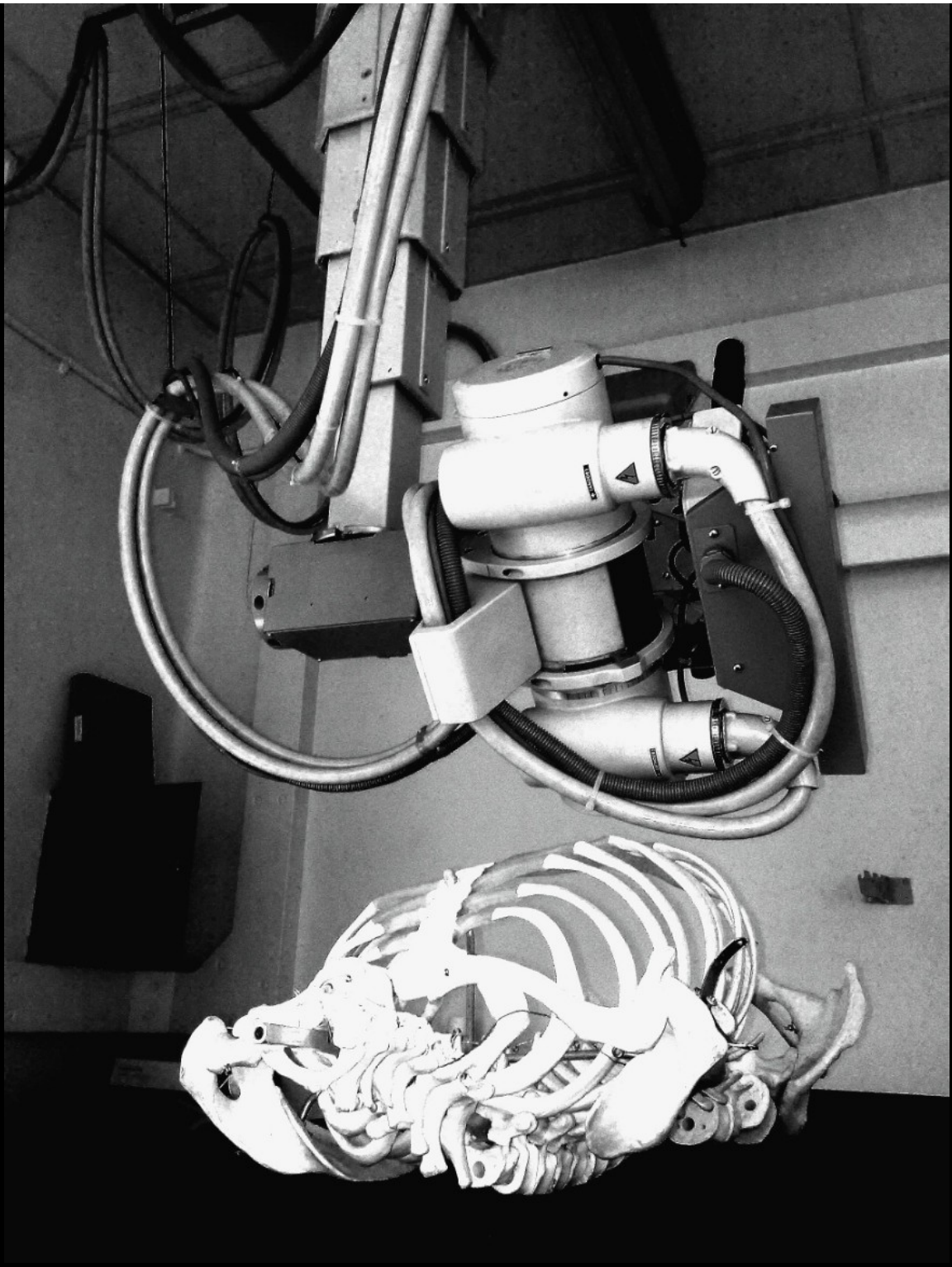






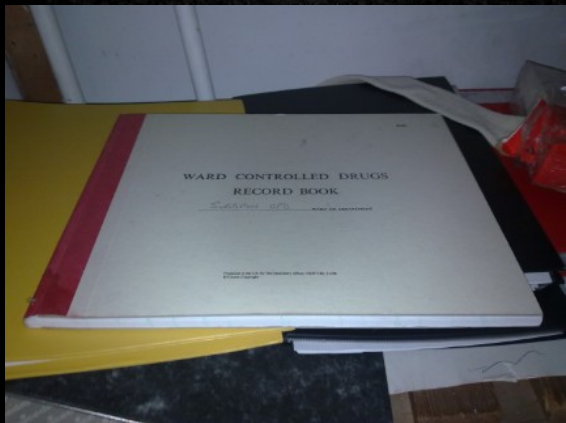














STOCKPORT 0161 48...

CLEANING INSTRUCTIONS
Wipe over with neutral detergent and hot water, rinse off and immerse in the ultrasonic cleaner for 15 minutes.
Use 6% hypochlorite solution for infection control purposes.
CAUTION CARELESSNESS CAUSES FIRE
Cautions and fire safety as a conforming product. For complete details refer to GB 5035.



VISITORS BOOK

- PLEASE FEEL FREE TO MAKE ANY COMMENTS ABOUT YOUR VISIT TO OUR DEPARTMENT.
- THANK YOU

Kingston **NHS**
Primary Care Trust

DATE	COMMENTS	SIGNATURE
13/1/11	Everyone very helpful + waiting room ^{clean} lovely +	J Graham
27/1/11	A Babani. Clinic - couldn't ask for better care	M. Gale
27/1/11	All staff very helpful	J. Gale
1/4/11	My appointment was for 8.30am and it is 9.10pm - I will not be there. Not happy	S. Gale
5/4/11	Scrupulously clean, staff could be more welcoming. 'Good Morning' would have been a very efficient thing.	J. Gale
10/4/11	Every one very helpful, we are still waiting for our appointment. Though it was meant to be at 3.00 but still waiting at 3.15	M. Gale

WASTED APPOINTMENTS

APRIL 2011

127 PATIENTS FAILED TO
ATTEND THEIR
APPOINTMENTS AT THIS
HOSPITAL **DUE TO DEATH**

aying:
hands

AGE
Concern
The
for old
Age Con
charity, o
• free an
• assista
money
• stimul
• specia
• a tele
• day c
• com
and
14 Ne
www







ROYAL BOROUGH OF KINGSTON UPON THAMES
TOWN AND COUNTRY PLANNING ACT 1990 (AS
AMENDED)



PLANNING NOTICE

SITE: SURBITON HOSPITAL, EWELL ROAD, SURBITON, KT6 6EZ

The Council of the Royal Borough of Kingston upon Thames has received an application for the demolition of Surbiton Hospital buildings (except the entrance lodge) and redevelopment of the site to provide:

- (a) a part 2/part 3 storey Healthcare Building (4,200sqm) (Use Class D1) providing premises for GP practices and a range of healthcare services; a stores building; a substation and a switch room with access off Ewell Road and secondary access from South Bank Terrace, 82 parking spaces, cycle parking and landscaping.
- (b) a 2 storey two Forms of Entry Primary School (Use Class D1) with plant room and capacity for 420 pupils and a 26 place nursery, 6 car parking spaces with pedestrian and cycle access off Ewell Road, Oak Hill and South Bank Terrace and service access and parking off South Bank Terrace.

The Proposed Development does not accord with the provisions of the Royal Borough of Kingston upon Thames Unitary Development Plan First Alteration 2005 (as amended) in respect of Policies BB4 Demolition of Buildings in Conservation Areas and BE8 Buildings of Townscape Merit.

A copy of the application, together with the relevant plans and documents, may be inspected at Information & Advice Centre, Guildhall II (0900-1700 Monday to Thursday, 0900-1645 Friday).

Any person wishing to make representations concerning the application should submit them, in writing, to the undersigned at the address given above, within 21 days of the date of publication of this Notice, quoting reference 10/16555/FUL & 10/16561/CAC.

Julie Baird
Interim Head of Planning
Guildhall II
Kingston upon Thames
M20 1LH



[GO TO THE FORUM](#)



[SIGN THE GUESTBOOK](#)